

SHANTUI

L68K-B5

Wheel Loader



Engine Model: Weichai WD10G240E201
Gross Power: 178kW@2200rpm
Operating Weight: 22,500kg
Bucket Capacity: 4m³

Performance and comfort you can feel,
Reliability you can trust!

L68K-B5 SPECIFICATIONS

ENGINE

Emission Regulation	Tier 2 / Stage II
Make	Weichai
Model	WD10G240E201
Rated Power	178 kW @ 2,200 rpm
Max Torque	1000 N · m
Displacement	9.726L
Number of Cylinders	6
Aspiration	Turbocharged

LOADER ARM PERFORMANCE

Tipping Load - Full Turn	137 kN
Bucket Breakout Force	205 kN
Maximum Dump Angle at Full Height	45°
Dump Clearance at Full Height Discharge	3480 mm
Dump Reach at Full Height Discharge	1300 mm
Maximum Hinge Pin Height	4718 mm
Maximum Digging Depth, Bucket Level	80 mm
Bucket Capacity	4m ³
Operating Weight	22500kg

TRANSMISSION

Transmission Type	Planetary, power shift
Torque Converter	Single stage, four elements
Maximum Travel Speed, fwd	37 km/h
Maximum Travel Speed, rev	16 km/h
Number of Speeds, fwd	2
Number of Speeds, rev	1

AXLES

Differential Front Type	-
Differential Rear Type	-
Axle Oscillation	±12°

STEERING

Steering Configuration	Articulated
Steering System Pressure	18 Mpa

BRAKES

Service Brake Type	Caliper disc brake
Service Brake Actuation	Air over Hydraulic
Parking Brake Type	Air brake
Parking Brake Actuation	Mechanical

TIRES

Tire Size	26.5-25
-----------	---------

HYDRAULIC SYSTEM

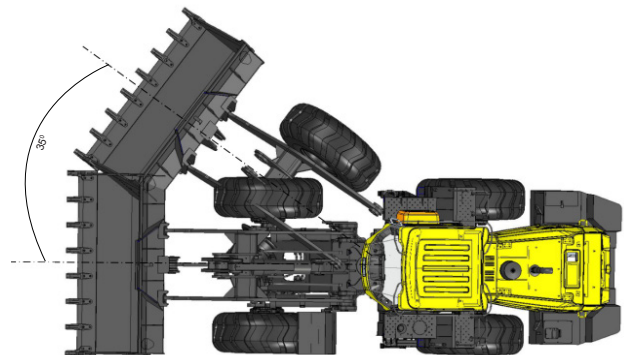
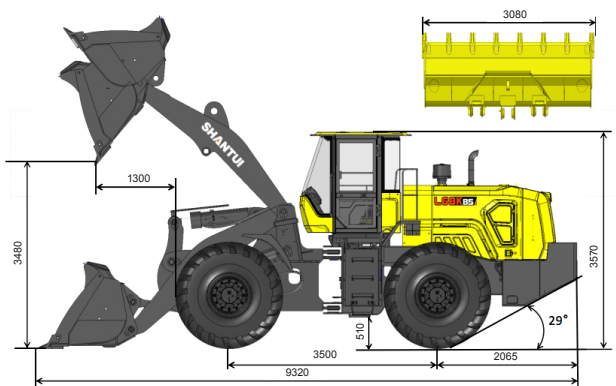
Main Pump Type	Gear
Main Relief Pressure	21 Mpa
Raise time	5.3 S
Total Cycle Time	9.97 S

SERVICE CAPACITY

Fuel Tank	330 L
Hydraulic oil Tank	255L
Engine Oil	21 L
Axles, each	41LX2
Transmission	45 L
Antifreeze	80 L

DIMENSIONS

Length	9320 mm
Width	3080 mm
Height	3570 mm
Wheelbase	3500 mm
Wheel Tread	2250 mm
Ground Clearance	510 mm
Turn Angle, Either Side	35°
Turning Radius, Outside of Tire	6955 mm
Turning Radius, Center of Tire	6675 mm
Turning Radius, Bucket Carry	7686mm



* THE SPECIFICATIONS ARE SUBJECT TO CHANGE WITHOUT NOTICE. THE PICTURES MAY INCLUDE OPTIONS. THE ACTUAL COLOR & APPEARANCE OF THE PRODUCT MAY DIFFER FROM WHAT IS SHOWN.



Shantui Social

SHANTUI CONSTRUCTION MACHINERY CO., LTD.
 ADD: No. 58, G327 Highway, Jining City, Shandong, CHINA
 TEL: +86-537-2909369
 FAX: +86-537-2311219
 EMAIL: trade@shantui.com
 WEB: www.shantui.com

SHANTUI
 LET'S MAKE CONSTRUCTION EASIER