



2023 PERFORMANCE

NEW – EXCLUSIVE EDITION

# RXP<sup>®</sup>-X<sup>®</sup> RS APEX 300

The most exclusive high performance PWC on the water.

## KEY FEATURES

- Exclusively available for a limited time
- Rotax<sup>®</sup> 1630 ACE™ – 300 engine
- T3-R™ hull
- Launch control
- Ergolock™ R racing seat
- Hydraulic steering damper and redesigned steering column
- Double-angled footwell wedges
- X-sponsons
- **Tech Package:** BRP Audio – Premium System, full color 7.8" wide display and USB port
- **Apex Package:** Carbon fiber hood and mirrors. Exclusive coloration on handgrips, carpets, stitching, badging, decals. Matching passenger seat and vehicle cover included



NEW Racing Green

## CAPACITY

Rider Capacity	
Weight Capacity	400 lb/182 kg
Fuel Capacity	18.5 US gal/70 L
Glove Box	2.56 US gal/9.7 L
Front Bin	37.78 US gal/143 L
Storage Capacity – Total	40.6 US gal/153.7 L

## DIMENSIONS

Length (bumper to bumper)	130.6"/331.8 cm
Width	49.2"/125 cm
Height	44"/111 cm

## HULL

Type	T3-R Hull™
Material	Fiberglass

## OTHER FEATURES

- iBR – Intelligent Brake & Reverse
- Extended VTS™ (Variable Trim System)
- RF D.E.S.S.™ key
- Watertight phone compartment
- LinQ<sup>®</sup> attachment system
- Wide-angle mirrors
- Round handle grips
- Footwell carpets
- Large swim platform
- Ski tow eye

## ROTAX<sup>®</sup> ENGINE

1630 ACE™ – 300

Intake System	Supercharged with external intercooler
Displacement	1,630 cc
Cooling	Closed-Loop Cooling System (CLCS)
Reverse System	Electronic iBR**
Fuel Type	98 Octane
Throttle System	iTC™ (Intelligent Throttle Control)
Exhaust System	D-Sea-Bel™ system

## GAUGE

Type of Gauge	Large panoramic 7.8" wide LCD display	
Main Functions	• BRP Connect	• Clock
	• Music	• VTS™
iTC System – Mode	• Weather	• Fuel consumption
	• Bluetooth connectivity	• Fuel autonomy
	• Speedometer	• Speed statistics
iTC System – Mode	• RPM	• Vehicle hours
	• Sport mode	• Speed regulator
	• ECO <sup>®</sup> mode	• Launch control
iTC System – Mode	• Slow mode	

## WEIGHT

Dry Weight	780 lb/354 kg
------------	---------------

## WARRANTY

BRP limited warranty covers the watercraft for 2 years.

\*Electronic brake, neutral and reverse.



## FEATURE HIGHLIGHTS



### Carbon Fiber Styling

Full carbon fiber hood and mirrors combine with premium badging, decals and color scheme to provide a breathtaking appearance to match its impressive performance.



### Apex Exclusive Features

The Apex only color scheme is complete with color matched hand grips, passenger seat and exclusive Apex branded vehicle cover.



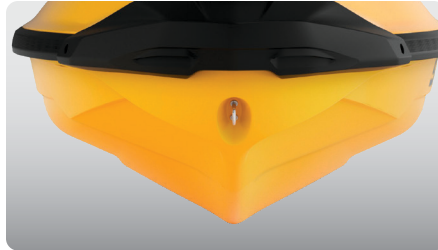
### Hydraulic Steering Damper and Redesigned Steering Column

An industry first, it redefines rider control by reducing input from the water; creating a solid and predictable feel that can be adjusted to rider preference. A reinforced steering column will withstand high performance stress.



### Rotax® 1630 ACE™ – 300 Engine

The Rotax 1630 ACE – 300 is the most powerful Rotax engine ever, delivering high efficiency and best-in-class acceleration.



### T3-R Hull™

A deep-V design that offers unrivaled handling and acceleration and a new level of control at high speed.



### Ergolock™ R System

A narrow seat profile with deep knee pockets and a revolutionary adjustable saddle that allows riders to lock in to the machine like never before.